

CONNECTICUT FOOD BANK

Annual Report for 2016-17

ON THE MOVE

toward a
hunger free
Connecticut



Message from Bernie Beaudreau, CEO



“...we take time to mark our achievements for the past year and to thank all who have supported our mission...

With this annual report, we present to you the data behind another year's efforts to fight hunger here in our state. The personal profiles of people who support or benefit from the Connecticut Food Bank go beyond the numbers to give you a deeper sense of the impact of your support.

Last year saw our highest distribution to date: **more than 25 million pounds of food – enough to provide more than 21 million meals.**

That is possible only with the support of food industry partners, financial donations from businesses and individuals, and significant effort by volunteers and staff who help to **move an average of nearly 70,000 pounds of food each day.**

This vitally needed food would not reach people without the committed work of our member programs. Last year, **more than 680 programs were the final link in the chain of compassion**, getting food into the hands and households of **more than 145,000 people each month** across our six-county service area.

More than 77% of the food we distribute is through a network of member programs that include community pantries, soup kitchens, shelters, and residential or day programs serving adults and children. Connecticut Food Bank direct distribution activity through the Mobile Pantry, GROW Up With Good Nutrition, Kids' Backpack program, and a monthly food distribution to seniors are in place to supplement community programs.

Last year saw the continuation of a disturbing trend. Despite a slight drop in USDA-reported food insecurity numbers, our network continued to see more demand for emergency food assistance. This demand comes increasingly from people holding down one or more jobs yet unable to meet basic needs. We have also seen a drop in the number of agencies and programs in our network over the past year. We know that some agencies face transitional challenges caused by generational shifts in leadership and in the aging of their volunteer forces.

We have made capacity growth for our member network part of our Connecticut Food Bank strategic action plan to help member agencies meet community needs. That work is already underway through programs like a refrigeration grant from Walmart that has allowed us to provide member agencies with new cold and frozen storage that allows them to accept, store, and distribute more food. We are working together with our member programs to build our food chain information and technology platforms, increase retail food donation sourcing, and increase the ranks of their volunteers.

While we take time to mark our achievements for the past year and to thank all who have supported our mission, we are moving forward to find more ways to serve people in need and to help eliminate chronic food insecurity in Connecticut.

Your loyal support will continue to build a stronger and healthier future for all the people of our state.

Bernie Beaudreau



How We Do It



Donations from individuals, businesses, foundations, and government grants provide food and funds for our work.



We source, store, package, and transport food. On average, 30% of our food is nutritious, fresh produce.



We distribute food to more than 650 member programs that serve an average of more than 145,000 people each month.



Food is provided to the 1 in 8 people – children, families, and seniors – in Connecticut who are hungry.



“

Last year saw the continuation of a disturbing trend. Despite a slight drop in USDA-reported food insecurity numbers, our network continued to see more demand for emergency food assistance. This demand comes increasingly from people holding down one or more jobs yet unable to meet basic needs.



The Need



More than 437,000 people in Connecticut struggle with hunger each year. They come from all backgrounds and live in every community. They are children; they are elderly; they are disabled; they are working one or more jobs and still not able to make ends meet; they are our neighbors.



Nearly 130,000 Connecticut children – one in six – do not know where their next meal will come from.



Working people are especially hard-hit: 42% of people in Connecticut who are food insecure are not eligible for federal food assistance because their households earn above the eligibility level, yet they are unable to afford basics like adequate food for their families.

When Work is Not Enough

Difficult life changes have left Lisa a single parent with three young children. She relocated from New York to live with her sister and her family.

In New York, she was a health aide, working nights as direct support professional for people with cerebral palsy, autism, and Down syndrome. During the day, she worked with people who need home health care or hospice care. “It was a good experience to help people, but some things happened, and I moved out here. My sister thought it would be a cheaper way of living,” Lisa says. “But even though I have degrees, I still can’t find a job.”

Lisa has an associate degree in office technology. She is two classes away from a bachelor’s degree in business administration. She has a home health aide license and direct support professional certification. “I can do clerical work, I have a few different trades. Right now, I’m working at a hotel. I am a housekeeper, but I only work one day a week, so I’m trying to find a new job,” she says. She earns \$10.10 per hour.

“I have three kids. Janis, she’s six. She’s in the first grade. I have Maria, she’s five... in kindergarten. And I have Joseph. He’s two and he goes to daycare. I got everyone on the bus and then came here to get some food to last me to the end of the month.”

Lisa says that, with her sister’s family, there are eight people in the household. “We put our money together to go food shopping. I make minimum wage, \$10.10 an hour. It’s housekeeping, you get some tips. They cut my hours to only Sunday, which is difficult. And they decreased my benefits from the Department of Social Services because I’m working, but I’m not working enough so it doesn’t supplement my benefits enough.”

Your Support

Individuals, businesses, foundations, community organizations, and food growers **last year donated more than \$47.2 million in food and funds** to the Connecticut Food Bank, helping us to distribute enough food to provide **more than 21 million meals**.

Volunteers donated more than \$836,000 worth of time, helping to collect, sort, package, and distribute food. They also gave their skills with research, data entry, office reception work, and many other office projects.

Your gifts of treasure and time are the driving force behind the Connecticut Food Bank.



Putting It All Together: Tom and Kathy Stone

In September, we honored Tom and Kathy Stone with the 2017 Commitment and Service Award at our donor recognition and 35th anniversary event for their long-time support of the Connecticut Food Bank as donors and volunteers. For more than 14 years, the Stones have given their time, skill, passion, and financial support to the Connecticut Food Bank. “We are committed to sharing a portion of our personal resources and energy with those in need,” says Kathy.

Kathy volunteers with our Development team, helping with data entry, mail processing, and general recordkeeping. Tom volunteers with our Mobile Pantry and with our program delivering

monthly food packages to seniors. “By focusing our primary commitments on the Connecticut Food Bank, we are more fully aware of the whole process, from funding, acquisition, and storage, through distribution to partner agencies and people in need,” says Tom. They are also regular donors to the Connecticut Food Bank and have participated in special events as volunteers and as contributors.

The food bank staff who work with them say that both Kathy and Tom have been dedicated, enthusiastic, and enjoyable team members.

The couple says volunteering their time to a cause they care

about keeps them engaged with their community and gives them each the opportunity to get involved individually with multiple aspects of the food bank. “This full view gives us great satisfaction that the Connecticut Food Bank uses our time and money wisely to make a real difference in the community,” Tom added.

Once a month, the couple volunteer as cooks at Beth El Soup Kitchen in Milford, which is a Connecticut Food Bank Member program. The basic need for food is meaningful to Tom and Kathy as much of their family time and social life revolves around cooking and hosting dinner parties.

Volunteers... *are love in motion!*



5,600
Volunteers



28,553
Volunteer Hours



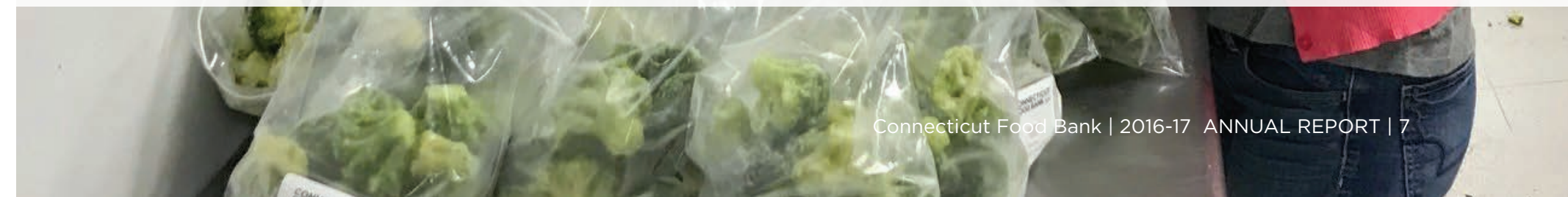
\$29.29
Value Per Hour



\$836,317
Financial Value



“Your loyal support will continue to build a stronger and healthier future for all the people of our state.”



The Impact



\$7.8 M

in funds donated by individuals, businesses, and foundations



27

local farms donated 1.7 million pounds of produce



576

monthly sustainers provide a steady source of funds



145,000

people served monthly by our member programs



5,600

volunteers donated over 28,550 hours



680

member programs in our network

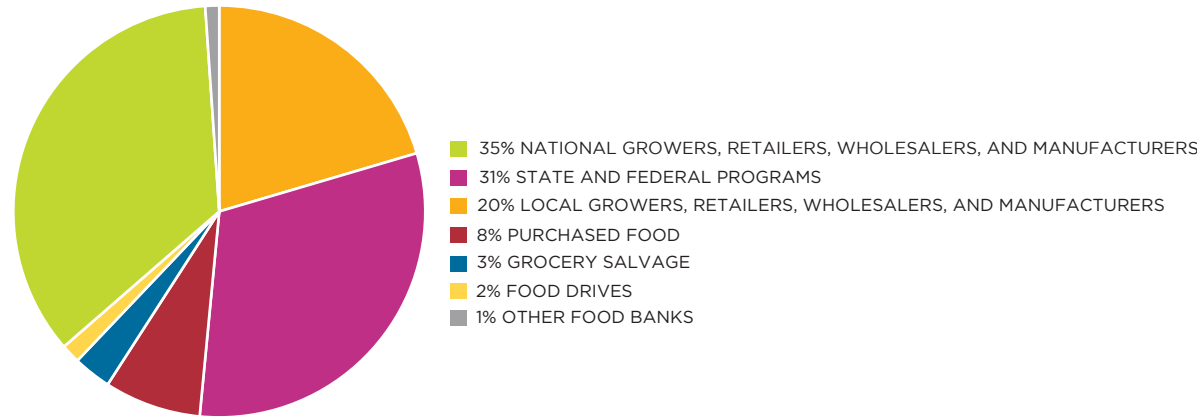


“ We are moving forward to find more ways to serve people in need and to help eliminate chronic food insecurity in Connecticut.”



“ We present to you the data behind another year’s efforts to fight hunger here in our state.

SOURCES OF FOOD

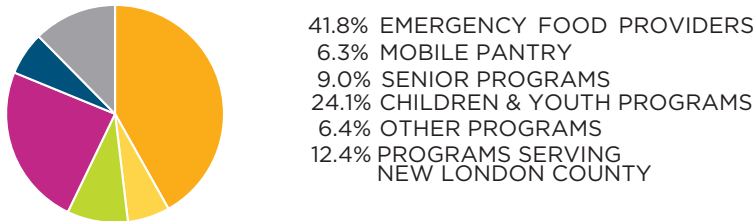


CONNECTICUT FOOD BANK

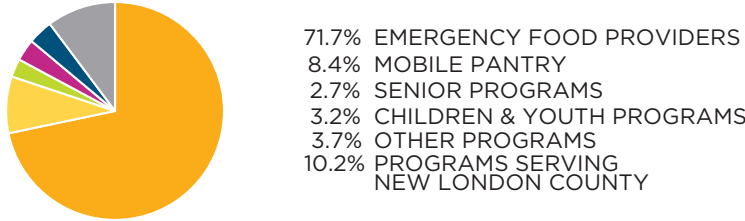
PROGRAMS, POUNDS, AND PEOPLE

- EMERGENCY FOOD PROVIDER NETWORK
- MOBILE PANTRY
- SENIOR PROGRAMS
- CHILDREN & YOUTH PROGRAMS
- OTHER PROGRAMS (RESIDENTIAL, DAY, AND NON-EMERGENCY)
- GEMMA MORAN UNITED WAY/LABOR FOOD CENTER
- PROGRAMS SERVING NEW LONDON COUNTY

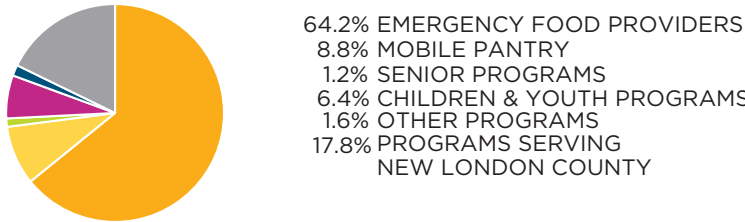
TOTAL NUMBER OF PROGRAMS: 686



TOTAL POUNDS DISTRIBUTED: 25,247,320



AVG. PEOPLE SERVED PER MONTH: 145,165



Financial Information

Revenue & Other Support

Contributions & Other Fundraising	16%
Program Revenue	3%
Government Grants*	2%
Net Assets Released From Restriction	1%
Donated Food	79%

Total \$ 50,113,702

*The Connecticut State Department of Social Services administers this grant program for the purchase of high-protein foods and the distribution of government commodities.

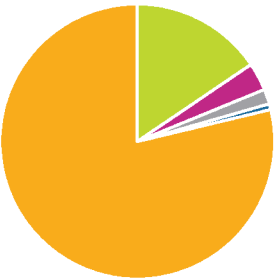
Expenses

General Administrative	2%
Fundraising	3%
Public Education & Awareness*	1%
Food Distribution*	94%

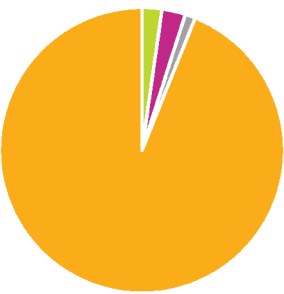
Total \$ 48,877,088

*95% of total expenses go directly to program services.

Revenue & Other Support



Expenses



Assets

Current Assets	\$ 5,926,170
Assets Whose Use is Limited	6,680,000
Land, Building and Equipment, Net	14,328,775
Pledges Receivable-Long Term	154,303

Total Assets \$ 27,089,248

Liabilities and Net Assets

Current Liabilities	\$ 1,273,513
Long-Term Debt	5,210,142
Net Assets:	
Unrestricted	
Designated by the Governing Board	6,680,000
Undesignated	13,220,912
Temporarily Restricted	704,681

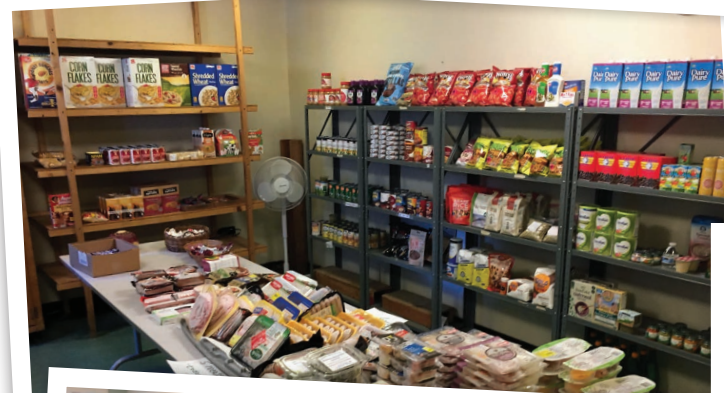
Total Net Assets 20,605,593

Total Liabilities and Net Assets \$ 27,089,248

This information is based on our audited financial results for the fiscal year ending June 30, 2017. Full financial report is available upon request or can be found at www.ctfoodbank.org.



“ Last year, **more than 680 programs** were the final link in the chain of compassion, getting food into the hands and households of more than **145,000 people each month** across our six-county service area.



“We’re happy to be part of the Connecticut Food Bank ... We’re blessed to get the meats and all the food to serve our community.”

Barbara Dublin, Executive Director, GWIM

Making a Daily Difference: Greater Waterbury Interfaith Ministries

Greater Waterbury Interfaith Ministries (GWIM) operates a range of services, including a soup kitchen, a food pantry, emergency pantry, and resource center. Barbara Dublin, executive director, has been with GWIM for 24 years, beginning as a volunteer and moving on to soup kitchen manager before becoming executive director. She says that GWIM began 25 years ago, serving 25 to 30 people daily from a small garage space added on to St. John’s Church. Currently located at 770 East Main Street, GWIM serves between 200 and 400 people each day, depending on the time of month and time of year.

GWIM is open Monday through Friday for meal service. “We serve a gourmet meal between 11AM and 1PM,” Dublin says. On weekends, they

provide bagged lunches to people in need. GWIM goes beyond food service, bringing in resources like legal aid, wellness services, SNAP outreach teams, and Social Security information services. Cooking classes are offered each week with a focus on diet and nutrition.

Dublin notes that in the summer they offer special feeding programs for school children who get breakfast and lunch during the school year, but might miss meals during the school vacation. The program includes Friday cooking classes that help the children make better nutritional choices.

GWIM also offers a food pantry, open from 7:30AM to 1PM on the last Monday of each

month, a difficult time for many who might have exhausted their SNAP benefits and budgets by that time. “We’re proud of our pantry,” Dublin says. “It’s consumer choice,” so shoppers can choose the items they prefer and are able to eat, rather than receive pre-packed boxes that may contain foods they would not use. Dublin says that GWIM also offers a daily emergency food pantry service that helps people who have no other resources for feeding their families.

“We’re happy to be part of the Connecticut Food Bank,” Dublin says, “because without them we wouldn’t be able to have consumer choice and the foods that we need. We’re blessed to get the meats and all the food to serve our community.”

Connecticut Food Bank Emergency Food Network

Fairfield County

164 Wilson Food Pantry - *pantry*
Agape Food Pantry - *pantry*
Agape Soup Kitchen - *meal site*
Apples Early Childhood Ed. Center - *Kids Backpack*
APT Foundation Residential Services - *residential*
Augustana Homes - *senior meals*
Barnum House - *senior meals*
Barnum School - *Kids Backpack*
Barnum/Waltersville School - *mobile pantry*
Beacon Laurelwood Place - *senior meals*
Beardsley School - *Kids Backpack*
Bethel Community Food Pantry - *pantry*
Bethel Housing Authority - *senior meals*
Bethel Memorial - *pantry*
Bethel Shiloh Apostolic Church - *pantry*
Bishop Jean Williams Pantry - *pantry*
Black Rock Pantry - *pantry*
Blackham School - *Kids Backpack*
Blessed Sacrament Food Pantry - *pantry*
Bridge House, Inc. - *pantry*
Bridgeport Elderly - *senior meals*
Bridgeport Rescue Mission - *meal site*
Bridgeport Rescue Mission - *pantry*
Bridgeport Salvation Army - *senior meals, pantry, shelter*
Bridgeport Spanish SDA - *pantry*
Bridgeport Tabernacle SDA - *pantry, meal site*
Broadview School - *Kids Backpack*
Brooklawn SDA Church - *pantry*
Brookside Elementary School - *Kids Backpack*
Brotherhood in Action of - *pantry*
Bryant School - *Kids Backpack*
Building One Community - *mobile pantry*
Calvary New Testament Pantry - *pantry*
Calvary SDA - *pantry*
Carver Community Center - *Kids Backpack*
CASA Inc. - *shelter*

Cesar A. Batalla School - *Kids Backpack*
Childrens Learning Center of Ffld. Cty. *day care*
Christian Revival Church - *pantry*
Classical Studies Academy - *Kids Backpack*
Claytor's Ministry - *pantry*
Clifford House - *senior meals*
Columbus Magnet School - *Kids Backpack*
Comida Food Pantry/ARC - *pantry*
Community Action Agency - *pantry*
Community Cats - *pet shelter*
Community Solutions, Inc. - *pantry*
Cooperative Education Services - *Kids Backpack*
Council of Churches Greater Bridgeport *meal site*
Cranbury Elementary - *Kids Backpack*
Cross School - *Kids Backpack*
Daily Bread @ St James Church - *pantry*
Danbury Salvation Army - *pantry*
Daughters of Charity - *pantry*
DOMUS Chester Addison School - *day care*
Dorothy Day - *meal site*
Early Childhood Center - *Kids Backpack*
East End Baptist - *meal site*
East End Community Council - *pantry*
Eat Smart Market Place - *pantry*
Edison School - *Kids Backpack*
Eli Whitney Elementary School - *Kids Backpack*
Ellsworth Ave School - *day care*
Emmanuel Apostolic Church - *pantry*
English Chapel Soup Kitchen - *meal site*
Faith Outreach Pantry - *pantry*
Faith Tabernacle - *pantry*
Families in Transition - *shelter*
Family Centers - *senior meals*
Feed My Sheep - *senior meals*
Filling In the Blanks - *Kids Backpack*
First Christian House Prayer - *pantry*
First Haitian Evangelical - *pantry*
Fox Run Elementary School - *Kids Backpack*
Franklin Elementary School - *Kids Backpack*

Fresh Start Food Pantry - *pantry*
Friends of Brookfield Pantry - *pantry*
Friendship Baptist Church - *pantry*
Gardner Ministries - *pantry*
Geraldine W. Johnson School - *Kids Backpack*
Golden Hill United Methodist - *meal site*
Good Shepherd Manna Kitchen - *meal site*
Great Plain School - *Kids Backpack*
Greater Emmanuel - *pantry*
GROWing Great Cooks - *mobile pantry*
Haitian American Catholic Center - *pantry*
Hall Neighborhood House - *senior meals*
Hall School - *Kids Backpack*
Hallen School - *Kids Backpack*
Hart Magnet - *Kids Backpack*
Harvest Food Pantry - *pantry*
Hawley Elementary School - *Kids Backpack*
Hayestown Elementary - *Kids Backpack*
Head O'Meadow - *Kids Backpack*
Hillside Food Outreach - *pantry*
Holy Name of Jesus Church - *mobile pantry*
Homes for the Brave - *residential*
Horizons - *residential*
Iglesia Pentecostal El Olivar - *pantry*
Inner City Children's Center - *day care*
Interfaith Aids Ministry - *pantry*
Isaiah House III - *residential*
Jamie Hulley Child Care Center - *day care*
Jefferson Elementary School - *Kids Backpack*
Jericho Partnership, Inc. - *pantry*
Jettie S. Tisdale - *Kids Backpack*
Jewish Family Services - *pantry*
John Winthrop School - *Kids Backpack*
Julia A. Stark School - *Kids Backpack*
K.T. Murphy - *Kids Backpack*
Kelly Meier - *mobile pantry*
Kendall Elemenatary School - *Kids Backpack*
King St. Intermediate School - *Kids Backpack*

King St. Primary School - *Kids Backpack*
King's Pantry - *mobile pantry*
King's Pantry - *pantry*
Kitchen of Hope - *meal site*
Light on the Hill Food Pantry - *pantry*
Lordship Elementary School - *Kids Backpack*
Luis Munoz Marin School - *Kids Backpack*
Madison School - *Kids Backpack*
Maple Street House - *shelter*
Mark of Excellence - *day care*
Marvin Elementary School - *Kids Backpack*
Mary Immaculate Day Care - *day care*
Mary Immaculate Day Care - *pantry*
McKinley School PTA - *Kids Backpack*
Middle Gate Elementary School - *Kids Backpack*
Monroe Food Pantry - *senior meals*
Monroe Food Pantry - *pantry*
Morris Street Elementary - *Kids Backpack*
Multicultural Magnet School - *Kids Backpack*
Naramake Elementary - *Kids Backpack*
Neighbor to Neighbor - *pantry*
New Canaan Food Pantry - *pantry*
New Covenant House - *pantry*
New Covenant House SK - *meal site*
New Hope Baptist Church - *mobile pantry*
New Life Church - *pantry*
Nichols Elementary School - *Kids Backpack*
Nichols United Methodist - *meal site*
Norma F. Pfriem @UCC - *pantry*
North End Community Council - *pantry*
Northeast School - *Kids Backpack*
Norwalk Housing Authority - *senior meals*
Norwalk Salvation Army - *pantry*
Office of Veteran Affairs - *pantry*
Open Door Shelter Pantry - *pantry*
Open Door Shelter Soup Kitchen - *meal site*
Operation Hope - *shelter*

Operation Hope Pantry - *pantry*
Optimus Health Care, Inc. - *pantry*
Pacific House - *shelter*
Park Avenue Elementary - *Kids Backpack*
Park City Initaitive/VO - *mobile pantry*
Paul Lauerence Dunbar School - *Kids Backpack*
Pembroke Elementary - *Kids Backpack*
Person to Person - *mobile pantry, pantry*
Pivot Ministries - *residential*
Prospect House - *residential*
PT Barnum Housing - *mobile pantry*
Read School - *Kids Backpack*
Reed Intermediate School - *Kids Backpack*
Re-Entry Ministry - *residential*
Refuge Temple Food Pantry - *pantry*
Resurrected Life ACI - *pantry*
Ridgefield Mobile Pantry - *mobile pantry*
Rogers Park Middle School - *Kids Backpack*
Roosevelt School - *Kids Backpack*
Salem Lutheran Church - *pantry*
Salt and Light Food Pantry - *pantry*
Sandy Hook Elementary School - *Kids Backpack*
Schilo French SDA - *pantry*
Second Hill Lane - *Kids Backpack*
Senior Neighborhood Support - *senior meals*
Shelter Rock Elementary - *Kids Backpack*
Side by Side Charter School - *Kids Backpack*
Silvermine Elementary School - *Kids Backpack*
Six to Six Magnet School - *Kids Backpack*
Skane School - *Kids Backpack*
South End Community Food - *pantry*
South Street School - *day care, Kids Backpack*
Southwood Square - *senior meals*
St. John's Family Center Inc. - *meal site, pantry*
St. Luke's Episcopal Church - *meal site, pantry*
St. Mary Parish-United Way - *day care*
St. Paul's Pantry - *pantry*
St. Vincent de Paul - *pantry*
Stadley Rough - *Kids Backpack*
Stamford Salvation Army - *pantry*

Sterling House Food Pantry - *pantry*
Stratfield Apartments - *senior meals*
Stratford Academy Victoria Soto School - *Kids Backpack*
Stratford Academy Johnson House - *Kids Backpack*
Stratford High School - *day care*
Summer Lighthouse BackPack - *Kids Backpack*
Sycamore Housing - *senior meals*
Tabernacle of God - *pantry*
The Eleanor Apartments - *senior meals, pantry*
The Ripton - *senior meals*
Thomas Merton House - *meal site*
Tracey Elementary School - *Kids Backpack*
Trumbull Social Services - *senior meals, pantry*
Union House - *shelter*
United Jewish Federation - *Kids Backpack*
United Tabernacle Apostolic Church - *pantry*
United Way Western Connecticut - *mobile pantry*
Veterans Affairs - *mobile pantry*
Victory Home - *residential*
Waltersville School - *Kids Backpack*
Wolfpit Elementary School - *Kids Backpack*
Women's Center of Greater Danbury - *shelter*
Women's Mentoring Network - *pantry*

Litchfield County
Community Culinary School of NW Conn. - *meal site*
Community Food Pantry - *pantry*
Community Services Council - *pantry*
Community Soup Kitchen - *meal site*
First Congregational Church Torrington *mobile pantry*
First Congregational Church - *mobile pantry*
FISH of Torrington - *pantry, shelter*
Fishes & Loaves - *pantry*
Forbes Elementary School - *Kids Backpack*
Friendly Hands Food Bank, Inc. - *pantry*
Hands of Grace - *pantry*
Kent Community Fund, Inc. - *pantry*
New Milford Social Services - *pantry*
New Milford United Methodist Church *pantry*

NW Conn. Community College - *mobile pantry, pantry*
Plymouth Community Food Pantry - *pantry*
Prime Time House - *day program, pantry*
St. Joseph's Church - *mobile pantry*
The Corner Food Pantry - *pantry*
The Salvation Army of NW Hills - *pantry*
The Salvation Army Winsted - *pantry*
Town of Plymouth - *senior meals*
Trinity Glen - *residential*
United Way of New Milford - *day care*
United Way Western Conn. - *mobile pantry*
Vogel Wetmore Elem. School - *Kids Backpack*
Winsted Area Child Care Center - *Kids Backpack*

Middlesex County

Abraham Pierson School - *Kids Backpack*
ACES Middlesex County - *day care*
Adelbrook, Inc. - *residential*
All People Community Outreach - *pantry*
Amazing Grace - *pantry*
Bielefield School - *Kids Backpack*
Chester Elementary School - *Kids Backpack*
Clinton Social Services - *Kids Backpack*
Cross Street AME/SVDP Middletown - *mobile pantry*
CRT Head Start - *Kids Backpack*
Daisy Ingranham Elemenentary School *Kids Backpack*
Deep River Elemenentary School - *Kids Backpack*
East Haddam Food Bank - *pantry*
Epoch Arts Center - *mobile pantry*
Essex Elemenentary School - *Kids Backpack*
Farm Hill Elementary School - *Kids Backpack*
Help Willy's Friends - *pet shelter*
Kathleen E. Goodwin Elementary School - *Kids Backpack*
Lewin G Joel Jr. School - *Kids Backpack*
Maconough School - *Kids Backpack*
Middletown Salvation Army - *pantry*
Middletown-Portland SDA Church - *pantry*
Old Saybrook Social Services - *mobile pantry*

Pondview Apartments - *senior meals*
Portland Senior Center - *mobile pantry*
Region 4 BackPack Program - *Kids Backpack*
Shiloh Baptist Church - *pantry*
Shoreline Soup Kitchens - *meal site, pantry*
Town Annex - *mobile pantry*
Wilbert Snow School - *Kids Backpack*
YMCA Phelps Ingersoll Center - *Kids Backpack*
Zion 1st Baptist Church - *pantry*

New Haven County

Abdul-Majid Karim Hasan Islamic Center - *mobile pantry*
ABI House - *residential*
AIDS Project New Haven - *pantry*
All Our Kin - *day care*
Animal Haven - *pet shelter*
Ansonia Animal Shelter - *pet shelter*
Barnard Environmental School - *Kids Backpack*
Lincoln Street School - *mobile pantry*
Believe in Me Empowerment Corp - *pantry*
Bella Vista Living - *mobile pantry, senior meals*
Bethel AME Church - *pantry*
Beth-El Center, Inc. - *meal site*
Bishop Woods School - *Kids Backpack*
Boys & Girls Club of Milford - *after school*
Boys and Girls Club - *mobile pantry*
Branford Food Pantry - *pantry*
Breakthrough Church - *pantry*
Bridges...Community Support - *day program*
Callahan House Association - *senior meals*
Caring Cuisine - *meal site*
Carrington Elementary School - *Kids Backpack*
Casa Otonal - *senior meals, meal site*
Casimir Pulaski - *Kids Backpack*
Cathedral of Higher Praise - *pantry*
Celentano Head Start - *Kids Backpack*
Celentano Museum Academy - *Kids Backpack*
Celentano School - *day care*
Centro San Jose, Inc. - *pantry*
Cheshire Community Food Pantry - *pantry*
Christ Episcopal Church - *pantry*
Christian Community Action - *pantry*

Christian Love Center - *pantry*
Christian Union Church - *pantry*
Christopher Columbus Academy - *Kids Backpack*
Church of God - *pantry*
Clarence Rogers School - *Kids Backpack*
Clemente Leadership Academy - *Kids Backpack*
Clients First Test - *shelter*
Clinton Ave. School - *day care*
CNV HELP, Inc. - Rogers House - *residential*
Columbus House Shelter - *shelter*
Community Baptist Church - *mobile pantry*
Community Dining Room - *meal site*
Community Pantries- CB Motley - *pantry*
Community Pantries- Crawford - *pantry*
Community Pantries- Fairmont - *pantry*
Community Pantries- McQueeney - *pantry*
Community Pantries- P. Bush - *pantry*
Community Pantries- RT Wolfe - *pantry*
Community Pantries- Westville - *pantry*
Community Pantries-Wilmont - *pantry*
Community Partners in Action - *residential*
Community Soup Kitchen - *meal site*
Community Tabernacle Outreach - *pantry*
Continuum - *shelter, pantry, residential*
Continuum - VA Crisis - *shelter*
Cornell Scott Hill Health Center - *mobile pantry, day care*
Crawford - *senior meals*
CT Renaissance, Inc. - East - *residential*
CT Renaissance, Inc. - West - *residential*
Davenport-Dunbar Home Pantry - *pantry*
DC Moore School - *Kids Backpack*
Downtown Evening Soup Kitchen - *meal site, pantry*
Door of Salvation Church - *mobile pantry*
Driggs Elementary School - *Kids Backpack*
Duggan Elementary School - *Kids Backpack*
East Haven Animal Shelter - *pet shelter*
East Haven Family Resource Center - *mobile pantry*
East Haven Food Pantry - *pantry*

East Haven United Community Kitchen *meal site*
Eastview - *senior meals*
Ecumenical Food Bank - *pantry*
Errara Community Center - *mobile pantry*
Evangelical Christian Church - *pantry*
Fair Haven Parent's Ministry - *pantry*
Fair Haven School - *Kids Backpack*
Fairmont - *senior meals*
Faith Baptist Church - *pantry*
Faith,Healing & Delivery Ministries - *pantry*
Farnam - *senior meals*
Father McKenna St. Vincent DePaul - *pantry*
Feed The Need Conn. - *meal site*
Feed the Need Food Pantry - *pantry*
Fellowship Inn - *day program*
Fellowship Place, Inc. - *day program*
First Assembly of God - *pantry*
First United Church of Christ - *Kids Backpack*
FISH of Greater New Haven - *pantry, senior meals*
Food For Kids - *Kids Backpack*
Food Pantry of North Branford, Inc. - *pantry*
Francis Walsh Intermediate - *Kids Backpack*
Free Forever - *shelter, pantry*
Friendship Club Pantry - *pantry*
Gateway Food Pantry - *pantry*
Glorified Deliverance Church - *pantry*
Good News Christian Center - *pantry*
Grace House - *senior meals*
Grant Street Partnership - *shelter*
Greater Valley Salvation Army - *pantry*
Greater Waterbury Interfaith Ministries *pantry, meal site*
Guilford Food Pantry - *pantry*
Halfway Home Rescue - *pet shelter*
Hallocks Landing - *senior meals*
Hamden Community Services - *pantry*
Harbor House - *residential*
Hearth House - *senior meals*
Hill Central - *day care*
Hill Central Music Academy - *Kids Backpack*
HOSTS Program - *pantry*
Iglesia Cristiana Palabra de - *pantry*
Iglesia Jehovah Rohi - *pantry*
Immanuel Baptist Church - *meal site, pantry*
Independence Center - *pantry*

IRIS: Integrated Refugee and Immigration Services - *pantry*
Irving Elementary School - *mobile pantry*
Irving School - *Kids Backpack*
Jared Eliot Middle School - *Kids Backpack*
Jewish Family Service - *pantry*
Jim's Carting - *pet shelter*
John J Driscoll ULA - *Kids Backpack*
John Prete - *senior meals*
Joseph's Storehouse Pantry - *pantry*
Katherine Brennan School - *Kids Backpack*
Katherine Harvey - *senior meals*
King Robinson School - *Kids Backpack*
Kollet Tifereth Z'Keinim - *pantry*
Liberty Community Svcs - *meal site*
Lincoln-Bassett School - *Kids Backpack*
Loaves & Fishes - *pantry*
Love Center Deliverance Ministry - *pantry*
M.L. Keefe Community Center - *day care*
Madison Community Services - *pantry*
Martinez School - *mobile pantry*
Master's Manna, Inc. - *meal site, pantry*
Mauro/Sheriden School - *Kids Backpack*
McQueeney - *senior meals*
Meriden Housing Authority - *senior meals*
Meriden Salvation Army - *Kids Backpack, meal site, pantry*
Meriden Soup Kitchen, Inc. - *meal site*
Milford Animal Shelter - *pet shelter*
Milford Food Bank - *meal site, pantry*
Ministry of Helps Foundation - *pantry*
Momauguin Elementary School - *Kids Backpack*
Monterey Place - *senior meals*
Morrissey Manor - *senior meals*
Mount Hope Recovery Center - *pantry*
Mt. Hebron Baptist Church - *mobile pantry*
New Flame Restoration - *pantry*
New Halls Gardens - *senior meals*
New Haven Church of Christ - *pantry*
New Life Apostolic Church - *mobile pantry*
New Life Church - *pantry*
New Haven Salvation Army - *pantry*
NICE - *pantry*
Operation Pantry - *pantry*
Options Social Center - *day program*

PAL Police Activity League - *mobile pantry*
Parents' Foundation - *residential*
Pendleton House - *pantry*
Prescott Bush - *senior meals*
Produce for the People - *pantry*
Project GREEN - *residential*
Rainbow Academy - *day care*
Recovery House - *shelter*
Reginald Mayo Early Learning School - *day care*
Residential Services - *pantry*
Rockview - *senior meals*
Roger Sherman School - *Kids Backpack*
Ross Woodward Classical - *Kids Backpack*
Ruoppolo - *senior meals*
Savin Rock Community School - *Kids Backpack*
Scantlebury Park - *mobile pantry*
Second Star of Jacob - *pantry*
Seymour / Oxford Food Bank - *pantry*
Shalom 7th Day Adventist - *pantry*
Sheila's Rescue - *pet shelter*
Shelter NOW - *shelter*
Solar Youth - *snack program*
South Genesee Park - *mobile pantry*
Southbury Food Bank - *pantry*
Southbury Senior Center - *mobile pantry*
Sprague Elementary School - *Kids Backpack*
St. Ann's Pantry - *pantry*
St. Ann's Soup Kitchen - *meal site*
St. Francis Catholic Church - *mobile pantry*
St. Gabriel Church - *pantry*
St. Luke's Church Food Pantry - *pantry*
St. Mary Church - *mobile pantry*
St. Matthew's U.F.W.B. Church - *pantry*
St. Vincent DePaul Pantry - *pantry, meal site*
Steele Berger Apartments - *senior meals*
Surf Side - *senior meals*
TEAM Head Start - *day care*
Teen Challenge - Men's Center - *residential*
The Bible Church - *pantry*
The Branford Kids - *Kids Backpack*
The Rock - *mobile pantry*
The Storehouse Project, Inc. - *pantry*
The Wolcott Resource Center - *pantry*
Troup Magnet School - *Kids Backpack*

Tuttle Elementary School - *Kids Backpack*
Union School - *senior meals*
Varick AME Zion Church - *meal site, pantry*
Vertical Church - *mobile pantry*
Walk of Faith Church - *pantry*
Wallingford Senior Center - *mobile pantry*
Wallingford Animal Shelter - *pet shelter*
Wallingford Housing Authority - *mobile pantry*
Walsh Elementary School - *Kids Backpack*
Walter Brooks House - *residential*
Washington Elementary School - *Kids Backpack*
Washington School - *Kids Backpack*
Waterbury Baptist Ministries - *pantry*
Waterbury Salvation Army - *pantry*
Waverly - *senior meals*
Wellmore, Inc - *shelter*
West Haven Animal Shelter - *pet shelter*
West Haven Head Start - *day care*
West Haven Public Schools - *mobile pantry*
West Rock - *mobile pantry*
West Rock Author's Academy - *Kids Backpack*
Westville Manor - *mobile pantry*
Wexler/Grant Community School - *Kids Backpack*
WHEAT - *pantry*
Wilmont Crossing - *senior meals, mobile pantry*
Winslow Celentano - *senior meals*
Wolfe - *senior meals*
Waterbury Salvation Army - *shelter*

New London County

Apostolic Cathedral of Hope - *pantry*
B.P Learned Mission - *day care, meal site*
Bent Crandall - *pantry*
Beulah Land Church Of God - *pantry*
Boys & Girls Club of SE Conn. - *day program*
Care and Share Soup Kitchen - *meal site*
CareCo Cognitive Fund - *senior meals*
Catholic Charities - New London - *pantry*
Catholic Charities - Norwich - *pantry*
Centro de la Comunidad - *day care*
Child Works Preschool - *day care*
Children's Program - *after school*

Colchester Youth and Social - *pantry*
Community Meals - *meal site*
Covenant Shelter - *shelter*
Conn. College Mentoring Program - *day program*
Directions, Inc. - *day program*
Dr. Martin Luther King Center - *pantry*
Drop In Learning Center - *meal site, day program*
Early Childhood Develop Center - *day care*
Essentials for Life - *pantry*
FHM Services, Inc - *shelter*
First Haitian Baptist Church - *pantry*
Fishes & Loaves - *meal site*
FRESH - New London - *after school*
Genesis House - *shelter*
George Washington Carver Apts. - *senior meals*
Girls & Boys Club Outreach - *day program*
Gordon Court - *pantry*
Gray Farm House - *group home*
Groton Social Services - *pantry*
Hamilton Park Apartments - *senior meals*
High Street House - *group home*
Humane Society of Conn. - *pet shelter*
Huntington Towers - *pantry*
La Famille de L'Eglise - *pantry*
Lord's Pantry - *pantry*
Madonna Place - *day program, meal site*
Main Street House - *group home*
Martin House - *meal site*
Michael Kerr's Respite - *shelter*
Mohican Pantry - *pantry*
Montville Senior/ Social Services - *senior meals, meal site, pantry*
Montville Union Baptist Church - *pantry*
Mother's Retreat - *meal site*
Mount Moriah Fire Baptized - *pantry*
Mount Olive SDA Church - *snack program*
MTC/UAW - *pantry*
Neighbors Helping Neighbors - *pantry*
New Life Church - *pantry*
New London Area Food Pantry - *pantry*
New London Community - *meal site*
New London Salvation Army - *meal site, pantry*
New London Senior Center - *senior meals, meal site, pantry*
New London Youth Organization - *meal site*
Norwich Free Academy - *pantry*

New London Day Nursery - Smith Bent Family Center - *day care*
Norwich Area Clergy - *pantry*
Norwich Group Home - *group home*
Norwich Salvation Army - *meal site, pantry*
Norwich Worship Center - *pantry*
Oasis Center - *snack program, pantry*
Oasis of Restoration, Inc. - *snack program, pantry*
Office of Youth Affairs - *snack program, meal site*
Opportunities Industrialization Center - *meal site, pantry*
Outreach for the Unreached - *pantry*
Pawcatuck Neighborhood Center - *pantry*
Penobscot Place - *meal site, pantry*
PILOTS - *pantry*
PILOTS Shelter Plus - *pantry*
POPPIN - *pantry*
Riozzi Court New London Housing - *pantry*
Riverfront Children's Center - *day care, pantry*
SCADD Detox - *residential, shelter*
Senior and Community Services - *pantry*
Shoreline Soup Kitchens - *meal site, pantry*
Sisters of Charity - *pantry*
St. Vincent De Paul Place - *meal site*
St. James Episcopal Church - *meal site*
St. John's Christian Church - *pantry*
St. Mary's Church - *pantry*
St. Mary's Church - *pantry*
St. Vincent De Paul - *pantry*
Stonington Arms - *pantry*
Thames River Apartments - *pantry*
The Johnson Home, Inc - *residential*
Town of Ledyard Social Service - *pantry*
Waterford Country School, Inc. - *residential*
Weekender BackPack Progam - *pantry*
Williams Park - *pantry, senior meals*

Windham County

ACCESS Agency Danielson - *pantry*
ACCESS Pantry Willimantic - *pantry*
ACCESS Shelter - *shelter*
Alternative Services, Inc. - *pantry*
Canterbury Cares/Congregational Church - *pantry*
Catholic Charities & Family Services - *pantry*

Central Assembly of God - *mobile pantry*
Community Kitchens of NE Conn. - *meal site*
Covenant Soup Kitchen - *meal site, pantry, senior meals*
Daily Bread - *pantry, senior meals*
Domestic Violence Program - Windham *pantry*
First Congregational Church/Willimantic *mobile pantry*
Friends of Assisi - *pantry*
Holy Family Home & Shelter - *shelter*
Moosup Elementary - *Kids Backpack*
Next Step - *residential*
Perception House - *residential*
Plainfield Central School - *Kids Backpack*
Plainfield Memorial School - *Kids Backpack*
Plainfield Senior Center - *senior meals*
Project PIN - *pantry*
Putnam Elementary School - *Kids Backpack*
Shepard Hill Elementary - *Kids Backpack*
St. Mary's/IHSP - *mobile pantry*
TEEG, Inc. - *pantry, senior meals*
TEEG, Inc. - *pantry*
United Services - *shelter*
Westcott Wilcox Eldery Housing - *residential*



Our Donors

The following individuals, businesses and foundations contributed \$1,000 or more during the fiscal year which ended June 30, 2017.

Gifts amount of \$25,000 and up

Anonymous (5)
Alice Lawrence Foundation, Inc.
Atlas Foundation
Bank of America Charitable Foundation
Bank of America Foundation
Brett & Coleen Hellerman
Bristol-Myers Squibb
Joseph Cassano & Ellen Hooker
The Community Foundation for Greater New Haven
Citizens Bank Foundation
Estate of Peter J. Davis
Enterprise Holdings Foundation
Dr. & Mrs. Alan & Betty Feldman
Feeding America
General Electric Foundation
Harriet G. Heineman
Harvard Pilgrim Health Care Foundation
Wes & Betsy Higgins
Hopkins School, Inc.
KeyBank Foundation
Orchard Farm Foundation
Parsons & Whittemore, Inc.
Scott & Robie Spector
Estate of Orris H. Stark
State of Connecticut
Stop & Shop
Subway Headquarters
TD Charitable Foundation
Christel Truglia
United Way of Western Connecticut, Inc.
Wakefern Food Corporation/ShopRite
Walmart Foundation
The Werth Family Foundation
Wings For Things Foundation
The Zide Family Foundation

Gifts amount of \$10,000 to \$24,999

Anonymous (3)
A-1 Toyota
Active Network
Rev. Harry Adams
Ahold USA
Almira Family Foundation
American Cruise Lines, Inc.
American Natural Soda Ash Corporation
Andrew Schlesinger
Benevity Community Impact Fund
The David & Eunice Bigelow Foundation
Estate of Freda Breslow
Richard & Marilyn Buel
Connecticut Community Foundation
Connecticut Credit Union Charitable Foundation
Connecticut Distributors, Inc.
Connecticut Health Foundation
Connecticut State Employee's Campaign
D'Addario Family Foundation
Eric & Nancy Gany
Dr. & Mrs. Eric & Mary Hyson
Fairfield County Bank
Bruce & Mary Fichandler
Renee B. Fisher Foundation, Inc.
The Honorable Holly Fitzsimmons & Mark Alvarez
Charles A. Frueauff Foundation
Genworth Foundation
William & Jean Graustein
Healthcor Foundation Trust
Kings Food Markets, Inc.
Knights of Columbus
Norman & Celeste LaCroix
Ben Ledbetter & Deborah Freedman
Lockheed Martin
The Macauley Foundation
MBIA Foundation
The Daniel & Sharon Milikowsky Family Foundation
Brian J. & Heidi Miller
New York Football Giants, Inc.
NewAlliance Foundation, Inc.
Newman's Own Foundation
People's United Community Foundation
Pfizer
William & Wendy Platt

The Dick & Bernice Ramsey Charitable Fund
Mr. & Mrs. John & Lupi Robinson
Ellen Ryerson & Leon Plantinga
Schaefer Inspection Service
James Schreck
Lynn & Jon Schriber
Peter Schwartzman & Anne Buehl
Dr. & Mrs. John Seibyl
The TJX Companies, Inc.
The TJX Foundation, Inc.
Robert F. Trudel & Amy Zinser
United Way of Coastal Fairfield County
University of Connecticut Foundation
Watson, Inc.
Webster Bank
Wells Fargo Foundation
Wilton Rocks for Food



Gifts amount of \$5,000 to \$9,999

Anonymous (14)
3M Foundation
Aetna Foundation, Inc.
All American Waste
Ann T. D'Addario Family Foundation
Anthem Blue Cross Blue Shield of CT
Balducci's
Bedoukian Research Inc.
Belvedere Foundation
Beyman Family Foundation
Bigelow Tea
Bimbo Bakeries
Thomas C. Bishop Charitable Fund
Mark & Deborah Blackman
Francis & Barbara Boyle
The Helen Breznicky Testamentary Charitable Trust
Faye & Andrew Brownfield
Burns & McDonnell
John & June Caldwell
Clear Channel Radio/KC101
Club Corvette of Connecticut
Connecticut Bar Association
Connecticut Container Corp.
CrossBay Capital Partners
Dr. Domenic V. Cicchetti
CT Open
David Cunn
D'Agostino Family Foundation
The Frederick A. DeLuca Foundation
Mark Dodman
Clare Dube
Thea Duell & Peter Cook
Dworken, Hillman, LaMorte & Sterczala
Eder Family Foundation, Inc.
Franke Family Charitable Foundation
John & Sherri Gagnon
General Reinsurance Corporation
The George Link Jr. Charitable Trust
Paige C. Gillies
Margaret G. Heppelmann & Michael Wacek
Edward Heyn

Estate of Jacqueline Holbrook
David L. & Sara Evelyn Hunt
Alexander & Pamela Hutchinson
Jonathan & Claire Sue Ingersoll
Josh Jernigan
Peter Kend & Katherine S. Wehrle
Klein Family Foundation
John & Anne-Marie Knight
L6 Foundation
Marta Jo Lawrence
Thomas & Roberta Lombardi
Thomas & Janice Luddy
The Carl Marks Foundation, Inc.
Katharine Matthies Foundation
Helen & William Mazer Foundation
Medtronic
Anne Moller
Pamela J. Murphy & Richard D'Avino
Rick & Stephanie Nathanson
Beverly Neal
Robert Newbold
Kate C. Paley
PartnerRe NA
PayPal Giving Fund
John & Paula Pritchard
Judy Rasmuson
John Riley
Robbins Tesar Inc.
Matthew & Jennifer Schiffman
Daniel Slattery
Jon & Cleo Sonneborn
Paul A. & Valerie C. Street
Mr. & Mrs. Brian Sullivan & Alina Sullivan
Peter Tauck & Mirellise Vazquez
TCS - Tata Consultancy Services
David & Nancy Tillson
Mac & Pat Turner
Richard & Stephanie Van den Broek
Robert Wechsler & Emily Aber
Charles & Lynn Weiner
David, Helen and Marian Woodward Fund
Wofsey, Rosen, Kveskin & Kuriansky, LLP



Our Donors (continued)

Gifts amount of \$1,000 to \$4,999

Anonymous (119) Wynne J.& Randall Abrams AFSCME Local 2663 Marion Aimesbury John Alan & Susan Bick The Albertsons Companies Foundation Albrayco Tech Brian Alden David & Karen Alexander Alexander Family Foundation, Inc. Alexion Pharmaceuticals Robert & Laura Allen Tom & Judy Allen Bruce & Terri Alpert Carolyn U. Altieri John Altieri Robert A. Altschuler Stephen L. Altshul Foundation Claude & Jennifer Amadeo American Academy of Matrimonial Lawyers- CT Chapter American Express Foundation American Fire Sprinkler Association Richard Amione Carl & Dorian Anderson Heather M. Anderson Robert & Nancy Anderson Barbara Andrews Norman & Margery Andrews Rick & Nancy Antle Appleby Charitable Lead Trust Arconic Peter Atwood Drs. Richard & Julia Auerbach Avalon Bay Communities, Inc. Lauren E. Avezzie Charitable Foundation Lisa Axelson Donald E. & Ruthann Aylor Elizabeth M. Bacon Bridget B. Baird Matthew Bandini Maria Barresi Barrett Outdoor Communications Max Barry Donna Bass William H. Bassett	Sarbani Basu Dr. Eric D. Baum & Ms. Danielle Antin-Ozerkis David & Kathleen Bavelas Richard Baxter Jonathan J. Beauchamp Bernie Beaudreau The Beckerer Foundation, Inc. Mark & Patrica Beckwith George & Mary Beitzel Bender, Anderson & Barba, P.C. Robert & Maria Benn Debbie L. Benner Berchem, Moses & Devlin, P.C. Eric & Ethel Berger James W. Berger Paul G. Berglund Cliff & Patricia Betron Better Business Bureau Jonathan & Susan Beyman Bharucha Charitable Foundation Bic Corporation Mark M. Bielstein Cynthia Bigelow Peter Binkley Michael Birbiglia Beverly Birenbaum Bixler Family Foundation James & Priscilla Blake BL Companies Inc. Bob's Discount Furniture Charitable Foundation Karen Boeckmann Freedman Francis & Jeanette Bogdan Judith N. Bogin Joan Bohan Terri Boissonneault Dr. Robert S. Boltax Bondi Foundation David Bonheim Mr. & Mrs. Bruce Bottomley Josh Bouchard Bourdon Forge Company, Inc. Paul Bowlin John Bozzi & Dr. Catharine Arnold Brady Corporation Foundation, Inc. Joseph & Colleen Brandon Marge Brandt J. Martin Brayboy Brenner, Saltzman & Wallman LLP	Brescome Barton, Inc. Edie Brickell Bridgewood Fieldwater Foundation Frank Brigano Sandra Bromer & Patricia Kearney Joanne Bronson John A. Brown Peter & Ann Bruchansky Robert J. Brunetti Paul Buccetti Robert & Mary Bucciferro Norma Buchman Rich & Betsy Buckley Jeffrey & Sara Buell Amy Burd Christopher Burdick & Noelle Moore Sylvia Burke Timothy Burnash Penny Burnett Dietrich & Anchi Burow Emma Burton CA, Inc. Bob & Jan Caligan Milton H. Callner Foundation Gerald & Susan Cambria Susan & Salvatore Camera Sally Campbell Campbell Soup Foundation Brooks Campion Stephen Canarozzi James W. Canfield Carol P. Cangiano Sandra Canning John & Sharyn Cannon Prof. Michael J. Caplan & Dr. JoAnne Burger Albert & Katherine Carbaugh Dr. & Mrs. Ronald & Evelyn Careb Mary Ann Carman Dorothy Carpenter Peter & Gail Carriero Nancy L. Carrington Anne Carroll Drs. James & Carolyn Carroll James & Nancy Carroll Charlene Cass CATIC Foundation, Inc. CCI Ce3 Inc. Celiac Support Association	Center for Medicare Advocacy, Inc. Art & Doreen Chabot Michael Charlton Joseph Chick Jenny Chou Cigna Foundation John & Mary Ellen Cleary Dr. Michael Cleman & Dr. Marilyn H. Moss Cly-Del Manufacturing Company Peter & Beth Cogan Bonita Cohen Gary Cohen Colchester Investment Counsel LLC Regina H. Coleman The Community Baptist Church Community Foundation of New Jersey Community Health Charities, New England Community Health Network of CT Foundation, Inc. Concepto, LLC Congregation Beth El, Fairfield Connecticare, Inc. & Affiliates Connecticut Information Security LLC James D. & Christine Cook Cooperative Funeral Fund, Inc. Jane Nelson Corbett & Dan Corbett Dr. John Corino Scott Cormier Cornelia Cogswell Rossi Foundation, Inc. Robert Creighton David & Victoria Crompton Barbara A. Cunningham The Curran Foundation Guy & Karen Daguanno Liane Dahlke John & Elizabeth Dailinger The Danford Foundation Stephen E. Darnell Edwin W. Davidson Davis Auctions, Inc. Richard Davis & Rita McCleary Dr. Kimberly Davis Jim Daxner DCL/Milbar Laboratories Virginia D. Dean Denese A. Deeds & David M. Gioiello Patricia Delano Raymond Delehant	Steven Della Rocca & Courtenay A. Hardy Michael Diamond & Amy Miller Geraldine Dickel Honorita & Dudley Diebold James H. Ditkoff Dimeo Construction Company Faith A. Dohm Robert Dombi Christopher & Ann Donnellis Sheila Donnelly Dr. Paul J. Donoghue Anne Dorsey Craig & Marilyn Douglas Frank & Augusta Downey Thomas Doyle Mark Drazak Dr. & Mrs. David & Deborah Dressler Brian Dreyfus Steven & Natalie Drucker DST Systems, Inc., Matching Gifts Program Kathryn A. DuPree & Joseph Marofito Roma H. Dupuis Eagle Shipping International USA LLC Earth Animal Eileen Ede Ed's Garage Doors, LTD Barbara Ehrlich Pamela K. Elkow Jeffrey Elliot Susan Ellison Nancy E. Eelman Endodontic Associates of Norwalk, LLC Edward N. Epstein Bob Ericson Beverly Espinosa The Exchange Club of Easton Executive Auto Group Eyecare Center of Waterbury Sally Factor Fairfield County Fish & Game Protective Association Inc. Siubhan Fallon John Faragher & Michele Hoffnung William M. & Blanche S. Feero Edward & Ronnie Fein Evelyn Ferguson Fernandes Family Foundation Keith S. Ferrara Gaetano Ferro	Dr. Richard Field & Ms. Lesley K. Baier James & Kathleen Filan Nancy Finch Michael R. Finick Nancy Finke Terese Fiore The First Church of Christ Ladies' Home Missionary Society First Church Congregational First Presbyterian Church Five Star Products, Inc. Estate of Edward J. Flynn Sean & Margaret Foley Jaclyn Fonteyne Charles & Anne Forber Robert & Andrea Forster Anthony & Martha Fouracre Fox Family Foundation John E. & Linda T. Fox Karen Francis Shirley Frankel Frontier Communications - CSF Headquarters Region Mary Kathryn Frost Fulton Forbes Inc. Denise A. Funk Peter Gallagher William & Sharon Gallagher Robert W. Garthwait Henry P. Gates Andrew & Catherine Geggie John H. Gernon & Rebecca S. Brienza Meredith Gershon & HowardFetner Arthur & Ellen Gerstein Christopher & Carol Gette Angelos & Margaret C. Giannakopoulos Sandra Gifford-Steffen Robert Gilberti Aaron & Betty Gilman Family Foundation Steven & Diane Girvin Give With Liberty Rolfe & Carol Gjellstad Dr. Jeffrey Glans & Ms. Louise Perkins Ruth & Jack Glantz Family Foundation Globe Equipment Company Stephen Godino Walter Goffart Joe & Cindy Goldberg Arthur & Joyce Goldfarb Goldman, Sachs & Co.	Tony Goldwyn & Jane Musky Good Done Great Goodrich Foundation/UTC Aerospace Systems William Gorczyca David & Meryl Gordon John Graham Kenneth & Deborah Grass Gray Organschi Architecture William Gray & Diana Romney Gray Kenneth G. & Sandy Green The Greenfield Hill Congregational Church Andrew Greenland Carolyn Greenspan Lawrence & Carla Gregory William Greim Eileen Ann Griffin Patricia Grigg Mr. & Mrs. Peter G. Grimm Estate of Wendy M. Gross Jeffrey L. Gross Julee Guinipero Gabrielle Guise & Jon David Tiktinsky Michael & Judith Guthman Robert S. & Claudia L. Gynnn Patrick & Janienne Hackett Nance Hahn Gay Story Hamilton Mareta Hamre & Mark Abbott Patrick Hanna Rachel Harrigan Devon & Debbie Hart Mark Hastings Robert Haxton Hayes Foundation Joseph P. Hendrick Robert Hennessey Dr. Peter N. Herbert Ronald & Paula Herren Susan Herron Nancy Hetmanski Kenneth M. Hibbard Dr. Roberta L. Hines & Mr. Jerry T. Liebrand Mark & Robin Hochstrasser Kevin T. Hoffman, Esq. Margaret Hooker Glenn & Melinda Houck Steve & Molli Hourihan Jim Housholder Eric Hoxie	Charlie & Kathleen Hubbard Catherine Hunihan Arthur & Mary Hunt Immanuel Baptist Church Impact Production Group, LLC Carol B. Ingher-Lombino Intl. Union of Operating Engineers Ion Bank Foundation Roy Irwin Robert & Anne Ivanhoe Jacabacci Construction Associates Inc. Michael Jackson The Jackson Laboratory Jacobs & Quiles, LLC Elizabeth A. Jacovino Jade Marketing Group LLC Charlotte A. Januska William M. Jayne Jr. Jeld Charitable Foundation Dwight Johnson Karen Johnson Mary Ellen Johnson Mike & Ann Johnson Barbara K. Jones Stephen Jones Gregory P. Joseph Elizabeth R. Joyce J. Michael Joyce JustGive Mark Kaduboski, Esq. Joel & Susan Kahan Jules & Sharon Kaplove John Karr Leon Karvelis Arthur & Judy Katz Norman Katz & Robert Yolles Dolores Katzenberger Robert Kaufman & Joann Chapel Hugh & Diane Kearney Dr. & Mrs. Tim & Jennifer Kearney Neal & Alison Keating Dr. Walter R. Keenan Eric A. Keener Virginia Keeshan Robert & Jane Keiter Patrick T. Kennedy Jr. Barton Kenney Susan Kerley KFK Dancing for Life, Inc. Aman Khan
---	---	--	---	---	---	--	---

Our Donors (continued)

Leroy Kidd
Margaret Kilgore
Laura & James Kilkenny
Jennifer A. King
Dr. Joseph T. King & Dr. Amy C. Justice
Phyllis Kingsbury
Keitha Kinne
Eric Klimas
Dorothy Knauert
Michael Kneeland
Carolyn Alsgiver Kobsa
John Kopas
Bruce & Donna Kosa
Koskoff, Koskoff & Bieder, P.C.
John & JoAnna Koster
William Kosturko & Jane Robinson
Silvia Kowolenko
William & Eileen Kraekel
The Kreitler Foundation
Karen Krupnik & Alexander Zaharoff
The Kurtz Family Foundation
Tracy A. Labowsky
Norma M. Lacasse
Doris T. Lajeunesse & Florence E. Daly
Karen Lambert
The Ethel & Abe Lapides Foundation
Stephen Larcen & Susan Graham
Prue B. LaRocca
Ronald & Linda Lastella
Karen M. Lavin
Law Office of Eileen Caplan Seaman
Law Offices of Neil Crane
Daniel & Linda Leary
Dirk & Patricia Leasure
Hannah H. Leckman
Dorothy LeCours
William & Anny Lesko
Paul & Theresa Levesque
Arthur W. Linden
Michael Linhares
Lions Club of Easton
Lions Club of New Haven
LoanCore Capital, LLC
Cynthia A. LoCascio
Kay Ellen Loewenthal
George & Grace Long Foundation
Louis Dreyfus Company
Harold W. Low
Ellen B. Lubell
Dorothy Alice Lucas

Mark & Cynthia Luedee
Mark D. Lynch
Michael Lynch
Mr. Ralph L. MacDonald Jr.
Jonathan & Amy Macey
Kevin MacGuire
Frank T. MacInnis
Leo Mackewich
Mark E. & Kate MacKinney
Frank & Penny Maher
Patricia M. Mahoney & John P. Sullivan
Amr Malik
The Malkin Fund
Sheldon Mandel
Ronald Manganiello
Kwan Lan Mao
Marcum LLP
Kenneth Marek & Deborah Dwork
Dr. Katherine Marschall
Edward Marsh
George & Elizabeth Martin
Jill E. Martin
Andrew Maselli
Mason, Inc.
William R. Massa
Mastercard
Susan Mattano
Robert & Mary Ann Matthews
Richard L. Matthies
Edward & Alice Mattison
Kathleen Maurer
Elizabeth S. Mayo
David & Taylor Mazza
The McCance Foundation
Holly McClellan
Bernard & Cynthia McDonald
Kieran McGrath
John & Catherine McHugh
Dennis & Susan McIntyre
Linda McMahon
Dr. Jennifer McNiff & Michael McNiff
Jerry McSorley
James & Lynn Mead
Richard & Valerie Mead
Matthew Mendelsohn
Eduardo & Claudia Menezes
Meridian Medical Management
Merkaz Community High School for
Judaic Studies
Drs. Jerome & Roslyn Meyer

William Meyers
Edward L. Michaelson
Christopher L. Miller
Edward G. Miller
Robert & Michele Millham
Nancy B. Milnamow
Lenore Milner
Devjani Mishra & Alexander Hoffman
Scott & Carol Mitchell
MJS Packaging
David & Beth Moffat
Mohegan Sun
Chuck Molnar
John & Jo Moody
Mark & Kristine Mooseker
Robert & Mary Lou Morgado
William & Mary Sue Morrill
William C. Morris
Elizabeth Morrow
Michael & Joanne Morton
George & Elaine Pickhardt
Douglas & Lisa Muller
Mary Mumford
Ines Murdock
William & Mary Murdy
Christopher M. Murtaugh
Stephen Myers
Brendan Naughton
Deborah J. Neff
New Haven Federation of Teachers
Newday Communications
Newtown Savings Bank
Northeast Beverage Corp of CT
Chelsea Northrup
Suzanne Novik
David Nyman
William & Jean O'Brien
Daniel Edward Offutt, III Private
Foundation Trust
Dr. Sara H. Ohly
Donna L. Olsen
Gregory Oneglia
Timothy O'Neil
OR&L Construction Corp
Order of the Eastern Star- Grand Chapter
of CT
Philip & Suejin Orlins
Dr. & Mrs. Jeffrey & Deborah Owens
Package Pavement
Felicia M. Paduano

Carl E. Painter
Marco & Ann Palmieri
Michael J. Palmieri & Lee Anne Duval
Rocco Pannella
Kenneth & Doris Papp
Kathryn Park
Katie Parks
Ralph Parson
Frederick A. Parsons III
Pat Munger Construction
Alan & Barbara Pels
People's United Bank
Frank Pepe
Pepsico Foundation
Steven Peterec & Mary Angela Glenn
Martha Peterson
Theodore Petroulas
Gary & Marilyn Pezzullo
Scott Phillips
Evelyn H. Pickering Stein
Steven & Janine Pickhardt
The Pinkert Family Fund
The Pinkus Foundation
Zachary W. Pitluk & Beth Roth
Pitney Bowes, Inc.
Marc Porosoff
David & Patricia Porter
Barbara Prothero
Portico Capital Securities
POR Touring, LLC
Price Chopper
Propp Family Foundation
Publishers Group
Joe Pucci & Dara Lieberman
Arlene Putterman
Linda L. Randell
Theodore A. Rapp Foundation
REAP Foundation, Inc.
Kristin & Michael Reed
Sharon Reed
Reed Exhibitions
William Reese & Dorothy Hurt
Dr. Mark Rego
Matthew Reilly
Anne & William Reynolds
Lucy Ricciardi
Mrs. John W. Ritter Jr.
Heather Robison
Eileen D. Rodman
Ralph & Sharon Rodriguez

Jeffrey & Debby Rogart
Virginia Rogers
George J. Romanik & Lauren McGregor
Dr. Marc Rosen
Gerald Rosenberg & Cheryl Wiesenfeld
Ritta Rosenberg
Charles & Deborah Royce
Louis Ruggiero
Marianne Head & Anthony Ruscito
Gavin & Nancy Rush
Marion Russell
Dr. William Rust
Ruthanne Ruzika
Michele Ryan
Drs. Robert & Georgina Sackstein
Sacred Heart University
Anne D. Sanger
Frank & Betty Lou Santino
Lawrence & Robin Sapanski
Sasco Foundation
David Saunders
Savings Institute Bank & Trust Company
Lewis G. Schaeneman, Jr. Foundation
Norma J. Schlager
Rony & Linda A. Schlapfer
Kenneth & Sallie Schmidt
Stephanie K. Schnabel
William & Maryanne Schoonmaker
Dr. & Mrs. Kevin & Donna Schuster
Eric Schwartz & Debra Fram
The Schwartz Family Foundation
Kathryn Scully
Maive F. Scully
The Selander Foundation
Peter & Carol Seldin
Tracy & Helen Selmon
Gail I. Selover
Sarah Serling
Leila Shakkour & Mike Thorne
Sirely Shaldjian
Sandra Shaner
John & Debra Shaw
Emory & Mary Lee Shawver
Bruce & Nancy Shay
Robert & Virginia Shiller Foundation
Gregoire Sideleau & Sandra Kuzmich
JoAnne Siebrasse
Dr. Mary Siegel
Sikorsky Aircraft IT Department
Dr. Frank Sirianni

Stanley Skowronek
Smart MLS, Inc.
Chris & Jennifer Smith
Grant & Jacqui Smith
James & Susan Smith
Stephen Smith
Thomas & Nancy J. Smith
Robert & Elizabeth Smoler
Camille Solbrig & Michael Weiner
M. Roberta Spann
Jeffrey & Kathryn Speed
Spinnaker Real Estate Partners LLC
Mary Stahley
Stanley Black & Decker, Inc
StanPak Company
Star 99.9/WEZN FM
State of Connecticut Dept. of Corrections
Philip M. Steinborn
Bart & Rebecca Steinfeld
William D. Stempel
James B. Stepanek & Valerie Hansen
Robert & Susan Stern
St. Francis Episcopal Church
Sabina O. Stone
Shepard & Marlene Stone
Thomas & Kathleen Stone
William C. Stone
Susan J. Stout
Michael Strathearn
Dr. Lynn Street & Donald B. Margulies
Walter & Brenda Strole
Mr. & Mrs. Chris Stroup
Jonathan & Kathy Sturman
Sugar Bakery & Sweet Shop
Mr. & Mrs. William Summers
Dr. Pavur Sundaresan
Sun Products Corporation
Carolyn Surgent & Jacques Friedman
Survey Sampling International
Herbert E. Swartz
Swedish Aid Society, Inc.
Swisher International, Inc.
Synchro Financial
The Taft School
Robert Tassinari
Taste at 261 LLC
Tauck
Mark B. Taylor
Tea Importers Inc.
John G. & Lisa Teltsch

Marcia Tenreiro
Tent of Abraham
Patrick & Kathleen Thibadeau
Thomaston Savings Bank Foundation, Inc.
Mr. & Mrs. Lincoln Thompson Jr.
Torin Thurston
TIAA-CREF
Tierney Family Foundation
Mary Tinetti
Carole L. Topar
Toyota Dealer Match Program
TranSigma
Travelers
Trinity Episcopal Church
TripBuilder Media, Inc.
Melinda Tuhus & Dr. Robert Dubrow
Mary Tuman
Stephen & Michelle Turbak
Mr. & Mrs. Peter J. Turecek
Truist
Martha Turner
Patricia Turner
TVEyes, Inc.
UBS
Unilever
United Church on the Green
United Illuminating
United Natural Foods, Inc
Universal Health Care Foundation of CT
The University Church in Yale
Siamak Vahidi
Nora Vaivads
Jeffrey & Janet Valentine
William Van Syckle
Albert Vanleuvan
John & Elise Vavrek
Sila Velazquez
Bill & Kristen Vietze
Usha M. Vishnupad
Christopher & Jill Vollmer
Debbie Vorce
The Vranos Family Foundation
Donna Wade
David & Susan Wakefield
Charles & Margaret Walden
Donald & Valletta Wall
Sylvanie Wallington & Robert Popham
Kevin & Suzanne Walsh
Stuart Warner
Stephen Watchorn Foundation, Inc.

Watering Pond Foundation
WATR
Roger Wehage
Judy Weinstock
Betty Weintraub
Eric C. Wenberg
Brett Wentzell
Michael & Anita Werdmann
William C. & Anne Wernau
Andrew Wertheim
Dr. Jeffrey West
Alicia Westerlund
Westport Woman's Club
Arlene A. Whalen
David S. Whalen
R. Channing Wheeler
The White Horse Country Pub and
Restaurant
Robert E. Whitfield
Teresa Whitney
Sarah A. Whittemore
Wiggin & Dana
Michael E. Wilens & Dr. Carolyn Longacre
Judy & Ronald Wilkins
Kevin & Helene Wise
Jennifer Wiseman
Dianne Witte & Richard A. Ford
Robert Wolf
Linda Wood
Woodbridge Rotary Club
James R. Worde
WPLR/Connoisseur Media
Charles & Mary Ann Wyand
Carl Yohans & Lois Wogrin
Yale Athletics
Corwin & Kristina Yulinsky
Joel S. Zackin & Celeste Suggs
Arwin Zeissler
Zai Zhu
Ziegler Family Fund
Melissa Ziegler
Clifford & Dvora Zierer
Eugene & Colleen Zingaro
Joseph & Susan Ziobrowski
Zisson Foundation



CONNECTICUT FOOD BANK

HEADQUARTERS AND DISTRIBUTION CENTER

2 Research Parkway
Wallingford, CT 06492
t/ 203.469.5000
f/ 203.469.4871

www.ctfoodbank.org
www.facebook.com/ctfoodbank
www.twitter.com/ctfoodbank
www.instagram.com/ctfoodbank

The Connecticut Food Bank welcomes questions, comments and ideas. All correspondence should be addressed to the Development Department. If your name is incorrect or you are receiving duplicate mailings, please call Sue Moore at (203) 741-9078 or email cfb@ctfoodbank.org.

FAIRFIELD DISTRIBUTION CENTER

74 Linwood Avenue
Fairfield, CT 06824
t/ 203.256.1935
f/ 203.256.1648



Connecticut Food Bank is a partner of Feeding America, a nationwide network of 200 food banks and 60,000 food pantries and meal programs that provides food and services to more than 46 million people each year.